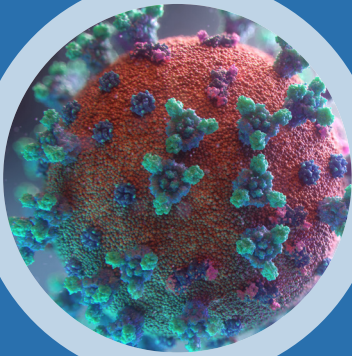


COVID-19 Preparedness and Response Plan



Sample



[page intentionally left blank.]

Sample

FOREWORD

This material was prepared in consultation with occupational safety and health general industry experts, authorized OSHA trainers, dental, healthcare, and veterinary professionals. This guide provides extensive coverage of various safety regulations for general industry and specifics for the healthcare, dental and veterinary professions as mandated by OSHA. The information contained in this guide has been compiled from various qualified agencies such as the Occupational Safety and Health Administration (OSHA), Centers for Disease Control (CDC), National Institute of Safety and Health (NIOSH) as well as state and local government entities.

ABOUT US

At Gamma Compliance Solutions, we come to work every day because we want to solve the biggest problem in regulatory compliance: helping you make sure you have met all the requirements. As an employer, you need a compliance program that is expansive and does not break the bank. As a worker or professional, you need comprehensive training for your day-to-day job and credentialing and, let's face it, some training is required by law. Consultants and trainers oftentimes have a core focus area like classroom-based training and may need the other mandatory elements of compliance.

We started our company in 2000 because we saw a gap in the market. No one offered comprehensive, reliable OSHA compliance and training resources for small- to medium-sized businesses that were cost-effective, easy to implement, and included ongoing support. We started OSHAManual.com to meet that challenge. We determined that the best way to deploy a well-researched compliance solution in a financially accessible way was in the form of a thorough, easy-to-use DIY kit.

Over the years, we have developed different compliance packages to suit practices at any stage in the OSHA compliance process. As our team has grown, we have expanded into HIPAA regulations and are continually adding to our areas of expertise. Our goal is to be a one-stop-shop for your compliance needs.

We are excited to simplify regulatory compliance for our clients so they can get back to doing what they do best.

DISCLAIMER

The parties involved in the creation of this material hereby explicitly disclaim any and all liability for any action, advice or opinion that results from the use or application of this material outside its intended purpose. Users acknowledge they understand their duty to abide by the laws, regulations and policies that regulate their specific industry and state. This guide is not intended to provide a comprehensive OSHA or Infection Control compliance protocol. While it covers specific provisions of OSHA and Infection Control as it relates to COVID-19, it is not a substitute for a compliance program. This plan is NOT intended for any industry involved in the direct treatment of COVID-19 patients or performing procedures on the bodies of individuals known to have COVID-19 at the time of their death.

TABLE OF CONTENTS

FOREWORD.....	3
ABOUT US	3
DISCLAIMER.....	3
INTRODUCTION	8
HOW TO USE THIS GUIDE	9
Reference Materials	9
Protocols	9
Resources	9
SECTION I: REFERENCE MATERIALS.....	11
ABOUT COVID-19.....	12
What is a coronavirus, SARS-CoV-2, and COVID-19?	12
Sources of COVID-19	12
Symptoms of COVID-19.....	14
Testing for COVID-19	14
People who need to take extra precautions	15
HOW COVID-19 COULD AFFECT WORKPLACES.....	16
Occupational exposure	16
Absenteeism.....	16
Change in patterns of commerce	16
Interrupted supply/delivery	16
Business operations limitations or closure	16
RECORDING/REPORTING INSTANCES OF COVID-19 IN THE WORKPLACE	17
Is the Confirmed Case of COVID-19 "Work-Related"?	18
Does the Confirmed Case of COVID-19 Meet the Recording Criteria?.....	18
Are All Recordable Illnesses Reportable?	18
RELEVANT STANDARDS FOR COVID-19.....	18
OSHA General Duty Clause.....	19
OSHA Bloodborne Pathogen Standard	19
OSHA Hazard Communication Standard.....	19
OSHA Personal Protective Equipment Standard	19
OSHA Recordkeeping.....	20
Worker Rights and Employer Responsibilities	20
Infection Prevention and Control Guidelines.....	21
OSHA Enforcement Memoranda.....	21
WORKPLACE CONTROLS	22
Elimination.....	23
Substitution.....	23
Engineering Controls	23

Administrative Controls	23
Personal Protective Equipment	23
ENDNOTES	25
SECTION II: PROTOCOLS	27
INSTRUCTIONS	28
CONTENTS	29
Risk Level Determination	29
Engineering Controls	29
Administrative Controls	29
Personal Protective Equipment Policy	29
Hand Hygiene Policy	29
Respiratory Hygiene and Cough Etiquette Policy	29
Environmental Infection Prevention and Control Policy	29
Screening and Incident Response Policy	30
Workplace Administrative Measures	30
Workforce Training Policy	30
Written Bloodborne Pathogen Exposure Control Plan (ECP)	30
OSHA 300 Series Forms	30
Written Hazard Communication Plan	31
RISK LEVEL DETERMINATION	31
Lower Exposure Risk (Caution)	32
Medium Exposure Risk	33
High Exposure Risk	34
Very High Exposure Risk	34
ENGINEERING CONTROLS	35
Physical barriers or other means of separating employees and customers/ patrons/patients (where feasible)	36
No-touch mechanisms such as for (detail mechanism used):	36
Addressing air quality:	36
Addressing air quality:	37
Follow directives in Screening and Incident Response	37
Specimen handling:	37
ADMINISTRATIVE CONTROLS	38
Communication Plan	38
Postings	39
Social distancing	39
Public Health Communications	39
Attending meetings and gatherings	40
Safe Work Practices	40
Worksite Access	41
Before Patients Arrive	43
After patients are assessed	44
Patient Follow-up	44
Safe Work Practices	44

PERSONAL PROTECTIVE EQUIPMENT POLICY	45
Respirator usage	45
PPE for Cleaning and Disinfection	45
Reusable PPE	46
Care for patients without COVID-19	49
Caring for a patient with known or suspected COVID-19	49
Additional considerations	52
Supply contingency and crisis planning	52
HAND HYGIENE POLICY	53
What is hand hygiene?	53
Why practice hand hygiene?	53
Methods to maintain hand skin health	53
Factors in choosing hand hygiene products	53
Postings	54
Key times to wash hands	54
Hand washing methodology	54
Use Hand Sanitizer When You Can't Use Soap and Water	55
How to use hand sanitizer	55
Postings	56
Postings	57
Hand Hygiene Methodology	57
Protocol for hand hygiene using soap and water or alcohol-based hand sanitizer (AHS)	57
Surgical Hand Antisepsis	58
Methods to maintain hand skin health	58
Fingernail care and jewelry	58
Glove use	59
RESPIRATORY HYGIENE AND COUGH ETIQUETTE	60
General Measures	60
Wearing cloth face coverings	60
Postings	60
Universal Source Control	64
Material availability	64
ENVIRONMENTAL INFECTION PREVENTION AND CONTROL	65
Additional considerations for Employers	65
Recommended disinfectants	66
Routine environmental cleaning and disinfection	67
How to clean and disinfect	68
Cleaning and Disinfection After Persons Suspected/Confirmed to Have COVID-19 Have Been in the Facility	70
Additional Considerations for Employers	70
SCREENING AND INCIDENT RESPONSE PROTOCOL	72
Important Definitions	72
Public guidance for community exposure and screening	73
Public guidance for community monitoring steps	74
Employee screening	74

Employee incident response steps.....	75
Recording and reporting steps for employers	75
Patients and visitors.....	80
Employees.....	81
Management	81
Additional Reporting Steps	81
WORKPLACE ADMINISTRATIVE MEASURES.....	82
Sick leave.....	82
Assess essential functions.....	82
Addressing absenteeism.....	83
Multiple business locations.....	83
Psychological and behavioral support.....	83
Travel advisory	83
Return to work criteria	84
Additional return to work criteria	88
Return to work practices and work restrictions	88
WORKFORCE TRAINING POLICY.....	89
Overview	89
Development of training.....	89
Conducting training.....	90
Training outline.....	90
ENDNOTES.....	97
SECTION III: RESOURCES	99
COVID-19 section of our blog	100
Social media.....	100
Webpages	101
Access to videos	103

Sample